



JILONG
Since 1993

OLS-22

Mini Multi-functional Optical Light Source



Mini size



Network test



Typical output
powder $\geq -5\text{dBm}$



LED lighting

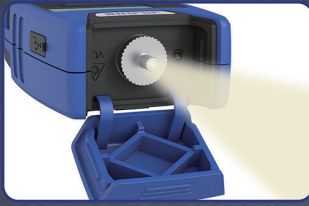


Carrier output

特征描述

- ◆ Pocket design, Mini size
- ◆ Support SM/MM/PON three laser output, used in conjunction with OPM
- ◆ Continuous output, three modulation frequencies(270Hz、1kHz、2kHz)
- ◆ Network test, judge signal transmission
- ◆ 2.5mm Universal adaptor for SC/ST/FC
- ◆ With LED lights for dark environment

Selling points



LED lighting

Convenient in dark environment



Network test

Accurate measurement, judge signal transmission.
Convenient for carrying and storage, prevent missing.



2.5mm Universal connector



SC

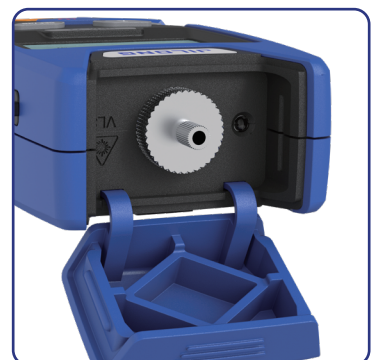


ST



FC

Product Display





Product Specifications

Model	OLS-22
Network test	Interface RJ-45
Wavelength	SM: 1310nm+1550nm MM: 850nm+1300nm PON: 1310nm+1490nm+1550nm
Connector	2.5mm Universal connector
Typical output powder	$\geq -5\text{dBm}$
Output stability	$\pm 0.05\text{dB}/15\text{mins}$ $\pm 0.1\text{dB}/8\text{H}$
Modulation frequencies	CW/ 270Hz /1KHz / 2KHz
LED lighting	Support
Power	AAA 1.5V batteries X 2
Dimension	112 x 57 x 31 mm
Weight	120 g (including batteries)

The above data are obtained in Jilong lab at 20°C temperature

Contact us

Nanjing Jilong Optical Communication Co., Ltd

Add: Room 401-402, Building 14-1, Xingzhahui Business Garden,
No.19 Xinghuo Road, Pukou District Nanjing, Jiangsu, 210032, China

Tel: +86 25 58880885

Mail: info@jilongot.com

Web: www.JILONGOT.com



Focus on official
website for more