



JILONG
Since 1993

VFL-22P

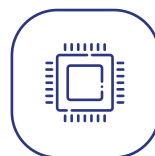
Pen Type Visual Fault Locator



Metal
material



2.5mm Universal
interface



Upmarket chip
strong light source



Pulsed and CW
operation



Features Description

- 40h continuous work
- 2.5mm universal adaptor for FC/ SC/ ST
- Measuring up to 30km, high stability
- High quality laser chip, strong light source
- Silicone dust cap
- Metal material, small and practical



Product Features

Hidden button

Prevent accidental touch

Upmarket laser chip

Stable and strong laser

Strong light source

Strong penetrating power
detecting up to 30km

Silicone dust cap

Made of silicone,
durable and dustproof

2.5mm Universal Connector

SC



FC



ST



Product Parameter

Model	VFL-22P-10	VFL-22P-20	VFL-22P-30
Output power	10mW	20mW	30mW
Detection distance	5-8Km	12-15km	20-25km
Operating hours	12H	10H	4H
Wavelength	650nm		
Laser type	LD		
Modulation frequency	CW / 2Hz		
Operating temperature	-20 ~ +60 (°C)		
Power	AA batteries x 2		
Dimensions	197 x 30 (mm)		
Weight	115g (Including batteries)		

1.Measuring distance depends on factors such as optical fiber bending, connector, quality, etc.

2.The above data were obtained by Jilong Laboratory in 20°C



Product Display



Contact us

Nanjing Jilong Optical Communication Co., Ltd

Address: 12F, Changfeng Technology Building 2, NO.14
Xinghuo Rd, Pukou District Nanjing, Jiangsu, 210032, China

Tel: +86 25 58880885

Mail: info@jilongot.com

Web: www.JILONGOT.com



Focus on official
website for more